

# AT A GLANCE

# 2021-2022 CASCW Title IV-E Faculty and Center Projects

**Jeff Waid (FaithVanMeter)**

## Resource card + Training Module

The **training module**, *Strengthening Sibling Relationships for Youth in Care: Considerations for Child Welfare Professionals*, discusses the importance of sibling relationships and various interventions to improve these relationships when siblings are separated in out-of-home placements.

The **resource card** addresses the developmental importance of sibling relationships. These strategy reminders can be useful when working with siblings and families in the child welfare system.

*Upcoming: **Training module** examining service navigation in Minnesota, including inequalities and barriers to care, as well as best practices for social work practitioners.*



**Lynette Renner (Amy Dorman, Jacob Otis)**

## Training Module

The **two-part training module**, *Co-Occurrence of Intimate Partner Violence (IPV) and Child Maltreatment and Batterer Intervention Program Interventions*, presents information on the co-occurrence of intimate partner violence and child maltreatment and provides an overview of batterer intervention programs.

*Upcoming: **Practice Notes** on screening for IPV and practice consideration for child welfare professionals when working with adults who experience IPV and adults who use IPV. **Practice Tips** on terminology related to IPV.*

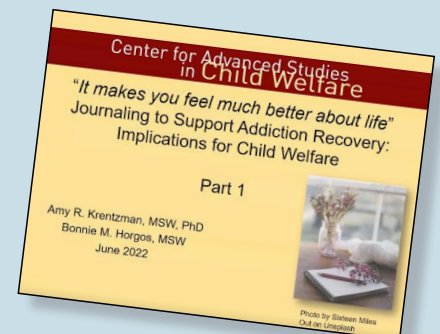


**Amy Krentzman (Bonnie Horgos)**

## Training Module

The **three-part training module**, *Journaling to Support Addiction Recovery*, describes the role of journaling in supporting addiction recovery and presents a new intervention called Positive Recovery Journaling.

*Upcoming: **Training Workshop** for 8-12 child welfare workers to learn the technique of Positive Recovery Journaling. Participants should then be able to run a Positive Recovery Journaling group in their own practice.*

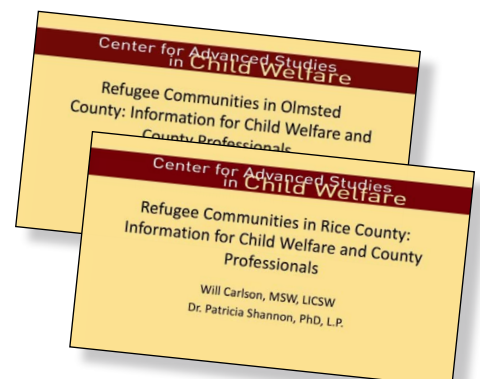


**Patty Shannon (Will Carlson)**

## Training Modules

The **training modules**, *Refugee Communities in Olmsted County: Information for Child Welfare and County Professionals* and *Refugee Communities in Rice County: Information for Child Welfare and County Professionals*, discuss key considerations for child welfare workers when working with refugee families. Particular advice is given for working with Somali families, who are the most populous refugee community in both counties.

*Upcoming: **Video project** featuring interviews of Afghan leaders to inform the practice of child welfare professionals working with Afghan families.*

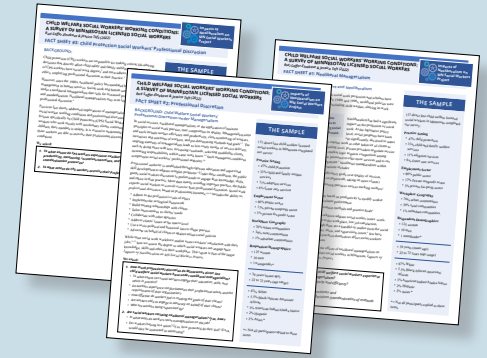


**Jessica Toft (Ruth Soffer-Elnekave)**

## Fact Sheets

**Three Fact Sheets** summarizing results from a statewide social work survey providing information for child welfare professionals on how neoliberal managerialism—or the increasing push for standardization and productivity—impacts the profession (specifically for child protection workers, rural social workers, and Minnesota Licensed school social workers).

*Upcoming: **Two podcasts** on the concept of professional discretion and resistance and how these concepts play out in social work, particularly in child welfare.*



**Priscilla Gibson (Jessica Coleman)**

## Experiential Learning Days

Planned and executed **Experiential Learning in the African American Community** (ELAA) for Title IV-E fellows to learn about and reflect on child welfare practice working with African Americans.

*Upcoming: **Two Experiential Learning days** for current Title IV-E fellows.*



**Wendy Haight/Gamble Skogmo**

**(Johara Suleiman, Shelby Flanagan, Sooky Park)**

## Animated Video, Training Module, Training in a Box

The **short animated video**, *Helping Somali Families Thrive in the United States*, describes some ways in which professionals engaging with Somali families can practice cultural humility and support families in a way that enhances the many culturally rooted strengths Somali parents possess.

The **three-part training module**, *Risks, Outcomes, and Inequities in Out-of-School Suspension*, discusses the risks and outcomes of out-of-school suspension, disparities in school discipline, and how these issues affect children involved in child welfare services.

**Practice Notes** and **Training in a Box** on Moral Injury and the impact on youth, parents, and professionals involved in child welfare.

*Upcoming: A series of **Infographics** to help train child welfare workers on working with Asian American families experiencing acculturation stress surrounding parenting issues.*



## Center for Practice Transformation (CPT)

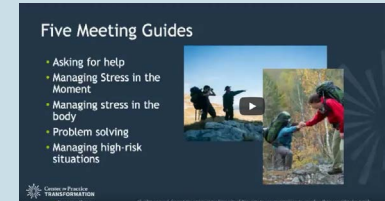
### Meeting Guides, Practice Tips, and Virtual Training

The **Meeting Guides** help when meeting with parents in recovery from substance use. The five topics are managing stress in the moment, asking for help, managing stress in the body, problem solving, and dealing with high-risk situations. Professionals can download all the guides or individual ones.

The **Practice Tips** discuss person-centered language in child welfare, mindfulness for child welfare workers, stages of treatment and stages of change applicable to parents with substance use disorder (SUD), goal setting for success with caregivers in child welfare, and the stages of recovery for caregivers with co-occurring disorders with substance use.

The **virtual training** walks the audience through using five very practical meeting guides, which are referenced above.

*Upcoming: Additional **Meeting Guides** for child welfare workers to use when working with parents and caregivers coupled with a **virtual training** on how to best use these guides. Create five **tools** for a **Training in a Box** and 6-8 hour on-demand **Training Engagement Workshop**.*



## Center for Early Education and Development (CEED)

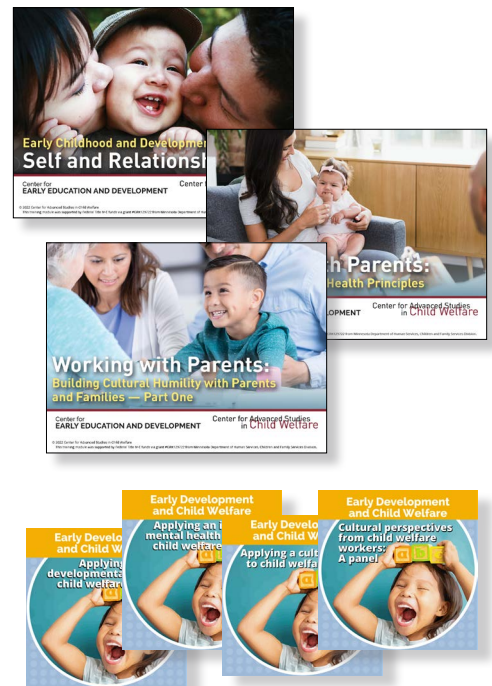
### Modules, Podcasts, and Website

The **three-part module series**, *Working with Parents*, covers the following topics: *Early Childhood Development*, *Building Cultural Humility in Partnership with Parents and Families*, and *Using Infant Mental Health Principles*. The series is meant to help child welfare professionals learn a wide variety of concepts to strengthen their skills working with families.

The **podcasts** cover a variety of topics in child welfare and include three episodes called *Father Engagement in Child Welfare Practice*, *Empowering Parents Who Are Separated and/or Incarcerated As Child Welfare Workers*, and *Well-being for Child Welfare Workers*.

**Ongoing website development** will be used to house and organize CEED and CASCW content so that related professionals can easily access this training information.

*Upcoming: **Host online consultation groups** on reflective supervision for supervisors and workers, create an **online certificate** to build foundational knowledge of child development for child welfare professionals and organize the website to facilitate certificate programming.*



### Upcoming:

**Saida Abdi** - **experiential learning days** in the Somali community for Title IV-E fellows

**Ceema Samimi** - **interactive virtual training** for child welfare workers and school social workers discussing school engagement and delivery during online learning.

**Mimi-Choy Brown** - **live training webinar** on the common elements of supervision.